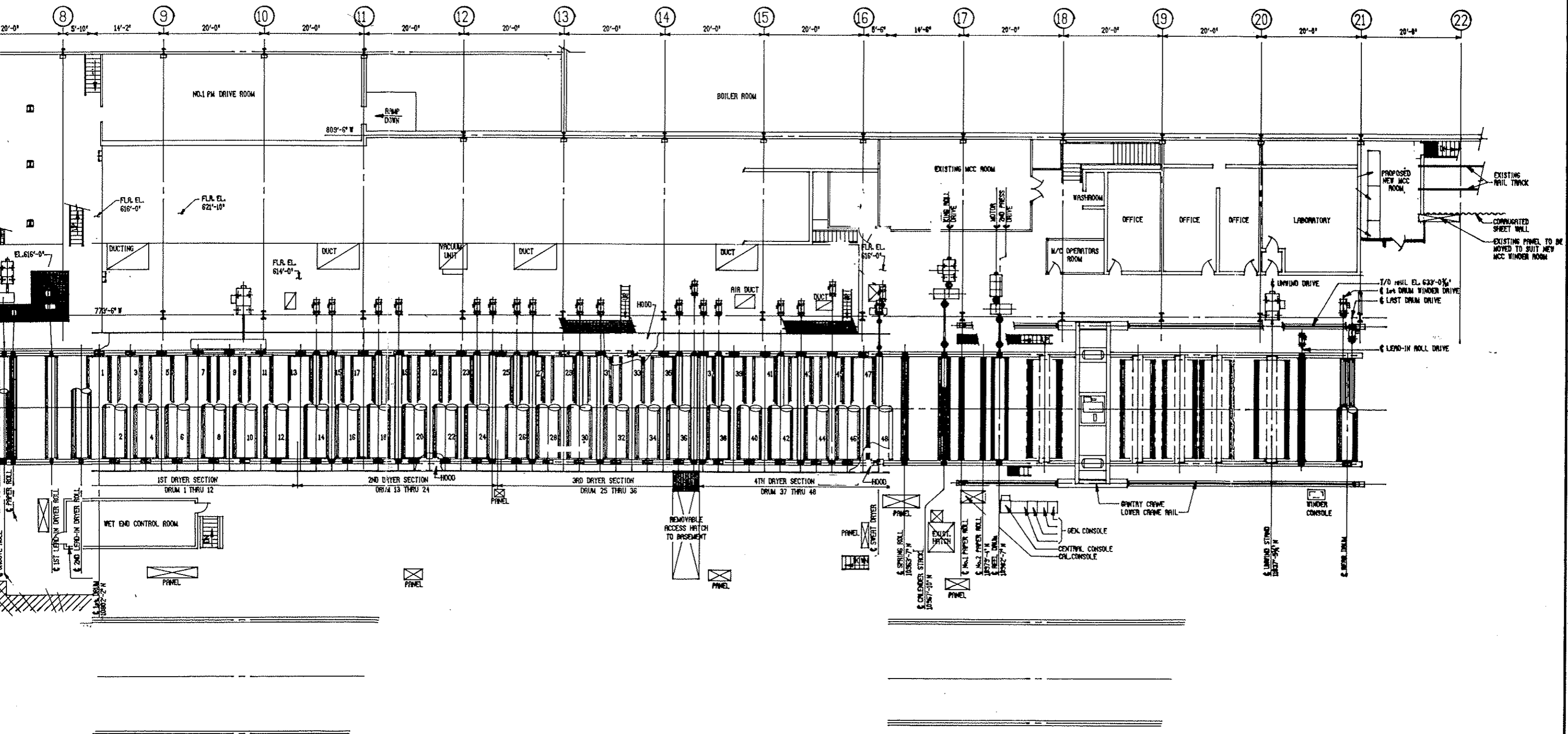
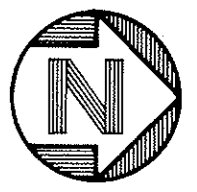
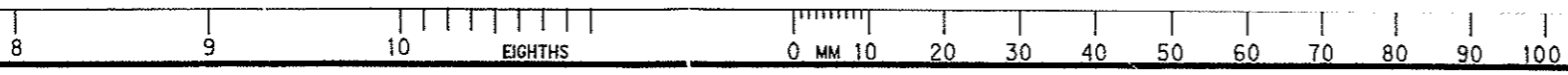
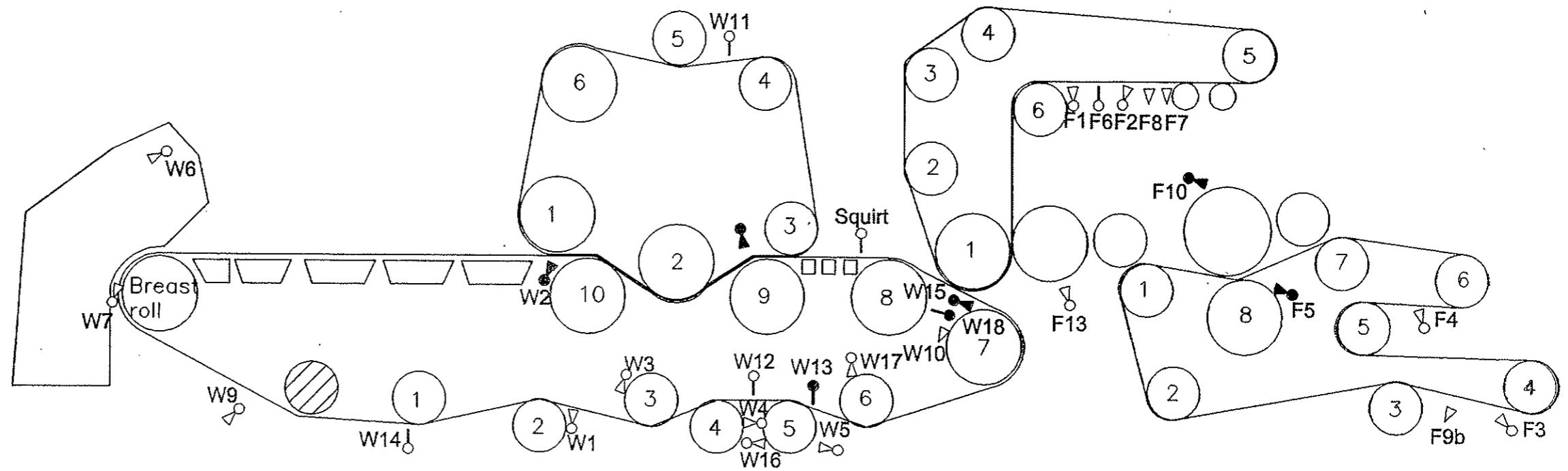


2

11'-6" LIMIT OF HOOK



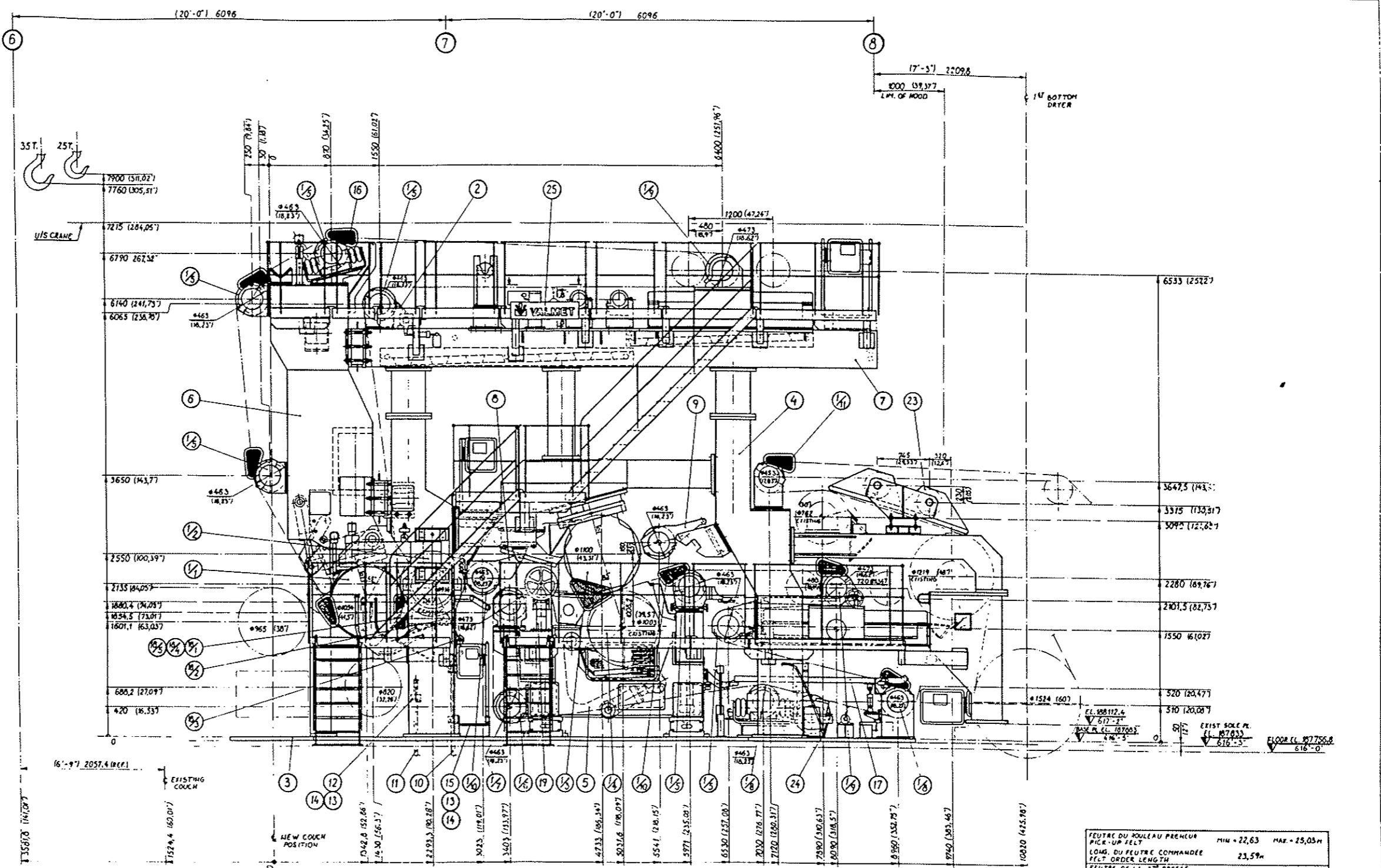


#1 PM

- W1 : Return roll #2 lube shower
- W2 : Lubricated shower for topflyte (not in use)
- W3 : Return roll #3 lube shower
- W4 : Roll #4 lube shower
- W5 : Roll #5 lube shower
- W6 : Headbox shower
- W7 : Breast roll shower
- W9 : Wire pit foam break shower
- W10 : Trim knockoff showers
- W11 : Top flyte oscillating H.P. cleaning shower
- W12 : Bottom fabric inside H.P. Osc. cleaning shower
- W13 : #2 Knock-off shower (for breaks)
- W14 : Bottom fabric outside H.P. osc. cleaning shower
- W15 : Forward roll flooding shower

- W16 : Return roll #5 lube shower
- W17 : Return roll #6 lube shower
- W18 : Couch internal shower
- F1 : 1st press chemical cleaning shower
- F2 : UHLE box edge shower
- F3 : 2nd press H.P. scan jet cleaning shower
- F4 : 2nd Press chem. cleaning shower
- F5 : 2nd Press grooved roll shower
- F6 : 1st press HP cleaning shower
- F7a-b : Uhle box edge lube shower
- F8a-b : Uhle box edge shower
- F9a-b : Uhle box edge lube shower
- F10 : 2nd press top roll doctor lube shower
- F13 : 1st press granite roll doctor lube shower

- ⊙ Knock off shower or flooding shower ON
- Knock off shower or flooding shower OFF
- ⊙ High pressure shower (needle) ON
- High pressure shower (needle) OFF
- △ Felt trim cleaning shower ON
- ▲ Felt trim cleaning shower OFF



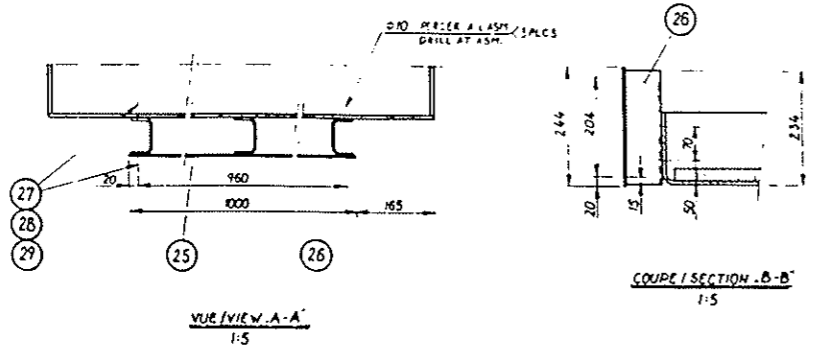
FEUTRE DU ROULEAU PRENEUR PICK-UP FELT	MIN = 22,63	MAX = 25,05m
LONG. DU FEUTRE COMMANDEE FELT ORDER LENGTH	23,59m	
FEUTRE DE LA 2 ^{ME} PRESSE 2 ND PRESS FELT	MIN = 12,84m	MAX = 20,24m
LONG. DU FEUTRE COMMANDEE FELT ORDER LENGTH	18,8m	

LARGEUR DU FEUTRE FELT WIDTH	MIN = 5,89m	MAX = 6,09m
---------------------------------	-------------	-------------

PRESSION MAX DE LA PINCE MAX NIP PRESSURE	
PINCE 1 ^{RE} PRESSE 1 ST PRESS NIP	78,8 kN/m
PINCE 2 ^{ME} PRESSE 2 ND PRESS NIP	122,6 kN/m

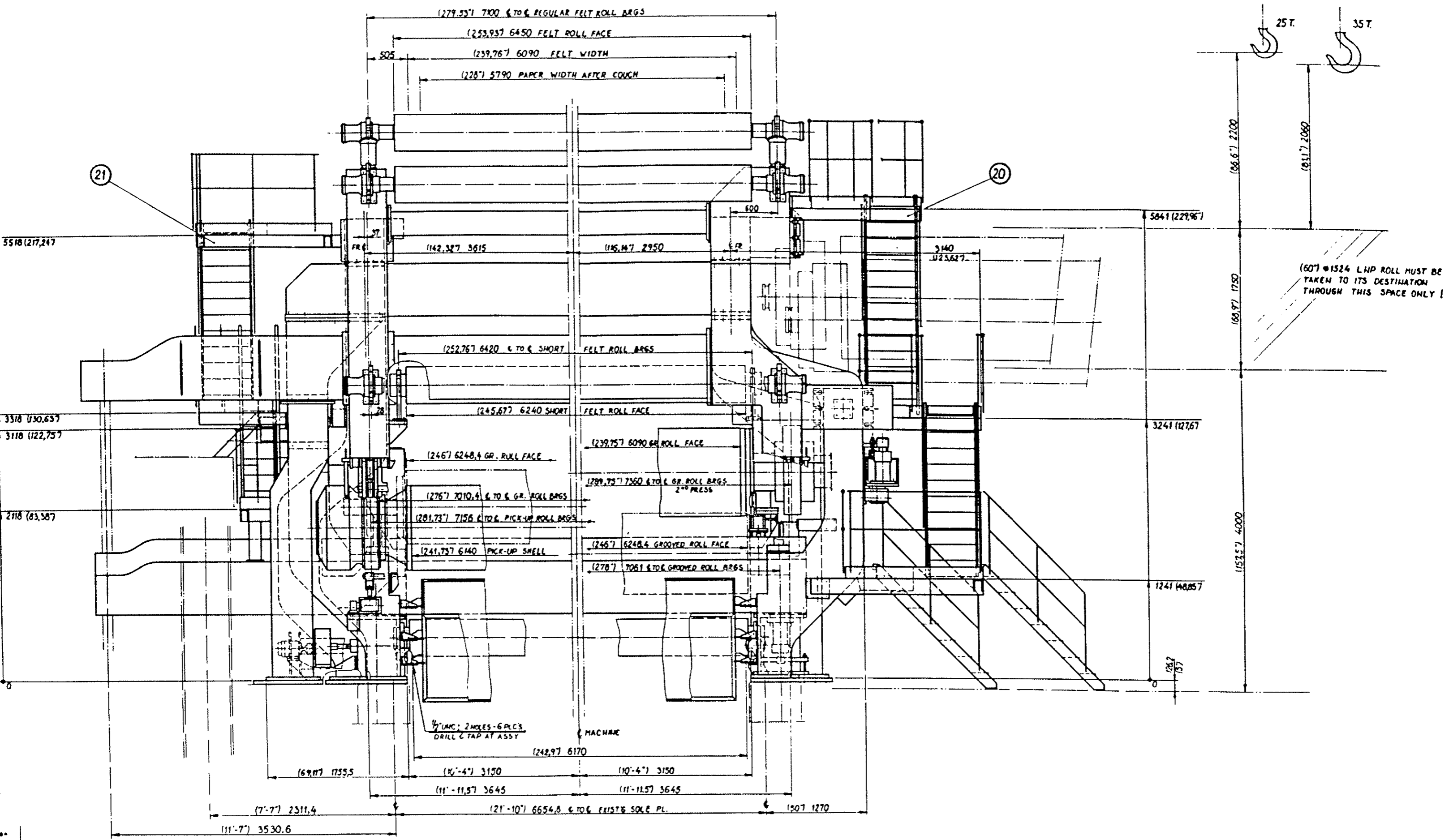
LARG. DE TOILE
WIRE WIDTH 6040mm (2375")

NOTE
- WEIGHT WITHOUT - EXISTING ROLLS
- HYD. CYLINDER
- BASE PLATES ASSY



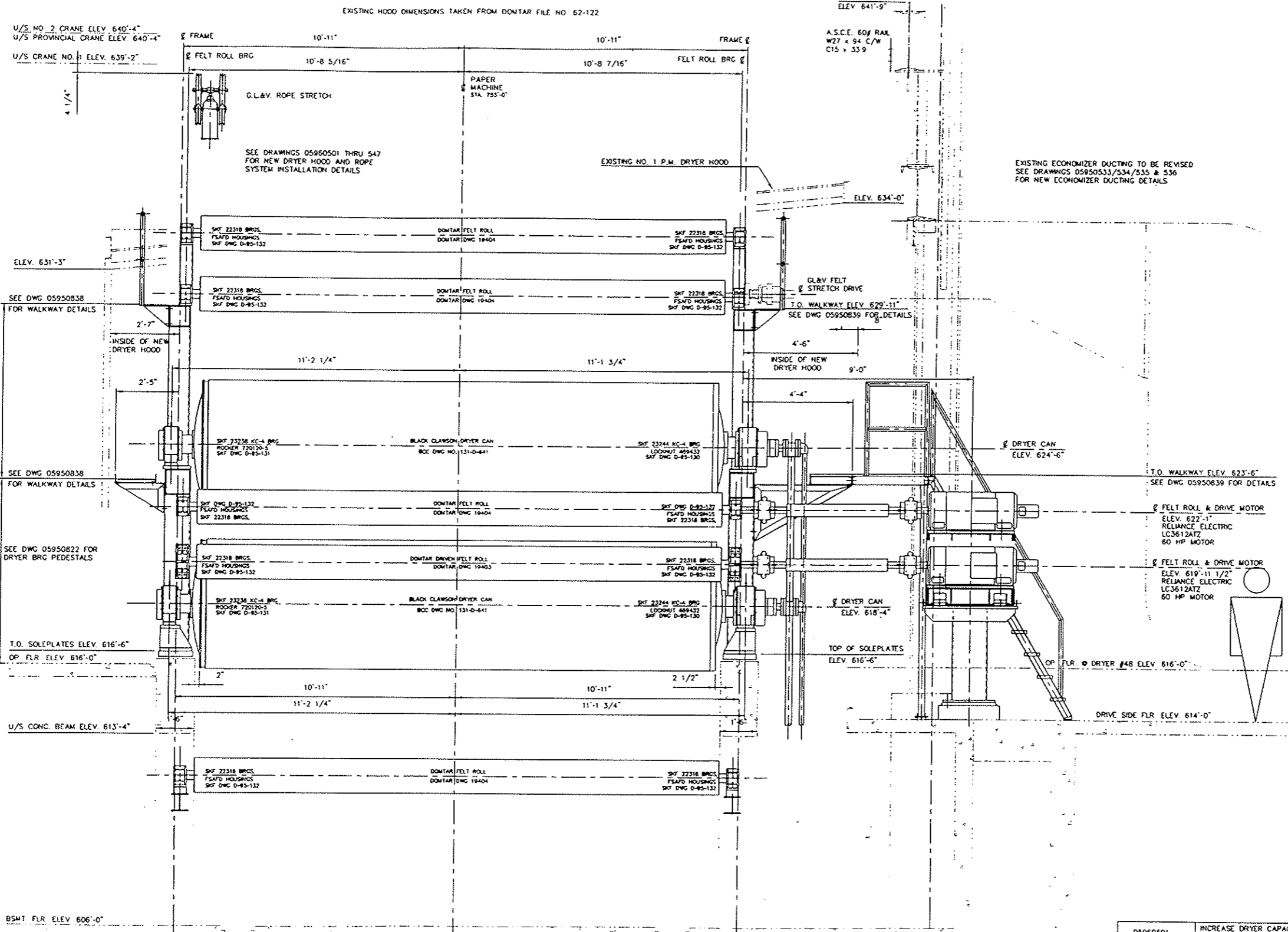
SHEET 1 of 2

VALMET	ASSEMBLAGE GEN DES PRESSES MAIN PRESS ASSY	60 300-1144
DYR R = 1	ASSEMBLAGES ASSEMBLAGES PRESSE PRESS SECTION	



24" x 36" / PLOT SCALE 1/2" = 1'-0"

THIS DRAWING IS THE PROPERTY OF SITTER ENGINEERING INC. IT IS TO BE USED ONLY FOR THE PROJECT AND SITE SPECIFICALLY IDENTIFIED HEREON. IT IS NOT TO BE REPRODUCED, COPIED, EITHER WHOLLY OR IN PART, OR TRANSMITTED IN ANY FORM OR BY ANY MEANS, ELECTRONIC OR MECHANICAL, INCLUDING PHOTOCOPYING, RECORDING, OR BY ANY INFORMATION STORAGE AND RETRIEVAL SYSTEM, WITHOUT THE WRITTEN PERMISSION OF SITTER ENGINEERING INC.



2ND, 3RD & 4TH DRYER SECTION CROSS SECTION
SCALE 1/2" = 1'-0"

+/- TOLERANCES +/-
UNLESS OTHERWISE NOTED
1/32" = FRACTIONAL
1/2" = ANGULAR
0.30" = X DECIMAL
0.15" = XX
0.10" = XXX
0.05" = XXXX
0.005" = XXXXX

05960501	INCREASE DRYER CAPACITY - NEW DRYER HOOD DETAILS
05950839	INCREASE DRYER CAPACITY - NEW DRIVE SIDE WALKWAYS - GEN. ARRANG'T
05950838	INCREASE DRYER CAPACITY - NEW TENDING SIDE WALKWAYS - GEN. ARRANG'T
05950801	INCREASE DRYER CAPACITY - NEW 1ST, 2ND, 3RD & 4TH DRYER SECTIONS

3	WALKWAYS	GENERAL REVISIONS	10/11/95	RS
2	DRIVER/M	T.S. FELT ROLL BRCS MOVED	10/11/95	RS
1	17/18/19/20	ISSUED FOR CONSTRUCTION	10/11/95	RS
E	DRIVER/M	DRIVE MOTORS MOVED 12" OUT FROM DRIVERS	10/11/95	RS
D	DRIVER/M	WALKWAYS ADDED	10/11/95	RS
A		PROPOSAL CONCEPT PLANNING	10/11/95	RS

SITTER ENGINEERING INC.
2407 Government Road, RR 12, Thunder Bay, Ontario, P7B 5G3

PASCOL ENGINEERING

DOMTAR PACKAGING
Consolidated Division
RED ROCK MILL
No. 1 PAPER MACHINE

INCREASE DRYER CAPACITY 2ND, 3RD & 4TH DRYERS CROSS SECTION DETAILS	
1/2" = 1'-0"	15 01 96
1/2" = 1'-0"	08 10 96
1/2" = 1'-0"	08 10 96
05950803	D
	3

SITTER ENG DWG No 05950803